

# Salmon in Haffjardara 2017

## The salmon catch in 2017

The total catch in 2017 was 1167 fish.

The catch of grilse and salmon since 1990 is shown in table 1.

The catch of grilse (I SW fish) was 960 fish and the catch of salmon (II SW fish) was 207 fish, 18% of the total catch.

912 (78%) of the fish caught in 2017, were released.

Weight distribution of the catch is shown in fig. 1.

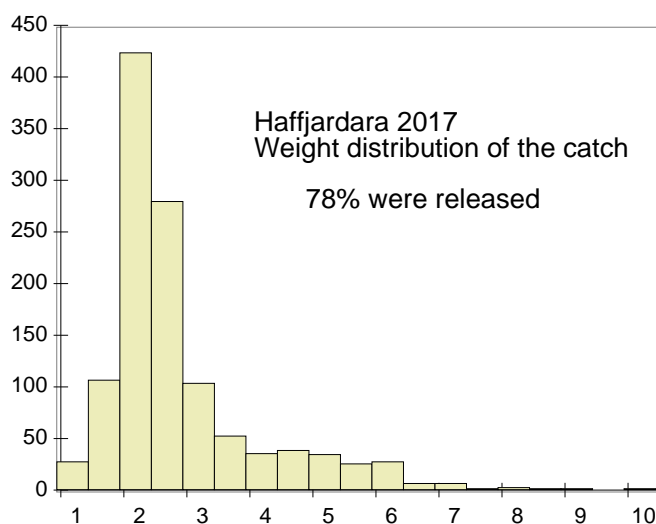


Fig. 1. Weight distribution of the salmon catch in Haffjardara in 2017.

50% of 3.5 kg fish and all larger fish were classified as II SW fish. Seven fish, 8 kg or more, were caught, the three largest fish were 10 kg.

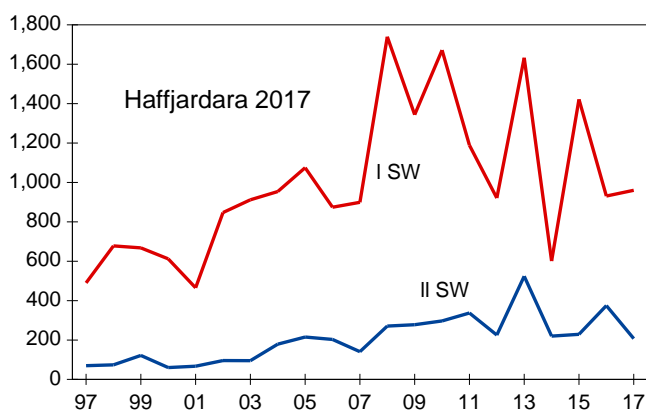


Fig. 2. N. of I and II SW fish caught in Haffjardara 1997 - 2017.

Year	I SW	II SW	Total	II SW%	Rel.	% Rel.
1990	475	148	623	24%		
1991	594	126	720	18%		
1992	703	122	825	15%		
1993	550	83	633	13%		
1994	567	103	670	15%	4	1%
1995	577	155	732	21%	0	
1996	533	69	602	11%	24	4%
1997	490	70	560	12%	0	
1998	678	74	752	10%	193	26%
1999	668	122	790	15%	302	38%
2000	612	60	672	9%	278	41%
2001	465	67	532	13%	246	46%
2002	847	96	943	10%	493	52%
2003	912	95	1007	9%	525	52%
2004	954	179	1133	16%	616	55%
2005	1075	215	1290	17%	929	72%
2006	874	203	1077	19%	749	70%
2007	899	141	1079	13%	767	71%
2008	1740	271	2011	13%	1599	80%
2009	1344	278	1622	17%	1227	76%
2010	1672	297	1969	15%	1509	77%
2011	1189	337	1526	22%	1274	83%
2012	921	225	1146	20%	854	75%
2013	1633	524	2157	24%	1821	84%
2014	601	220	821	27%	630	77%
2015	1422	229	1651	14%	1318	80%
2016	931	375	1306	29%	1026	79%
2017	960	207	1167	18%	912	78%
Avg 90-01:	576	100	676			
Avg 02-07:	927	155	1088			
Avg 08-13:	1417	322	1739			
Avg 14-17:	978	258	1236			

Table 1. Catch of grilse (I SW), salmon (II SW) in Haffjardara 1990-2017, number and percentage of released fish. Averages 1990-2001, 2002-2007, 2008-2013 and 2014-2017.

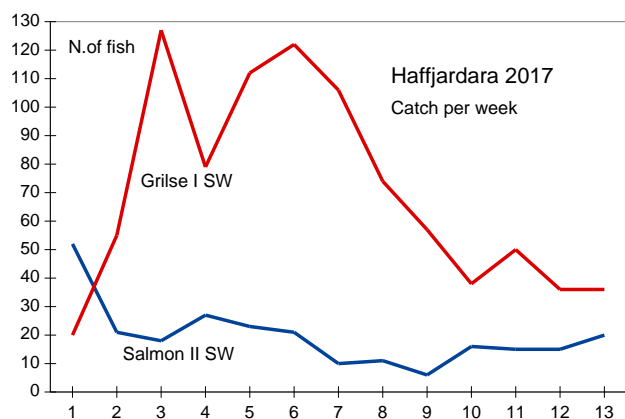


Fig. 3. Catch of grilse and salmon by weeks. First week starts 15/6, last fishing day is 12/9.

Two winter salmon enter the river first, the grilse a little later. Therefore, big fish dominate the catch first in the season.

The catch of salmon is highest in the first week then it declines but increases slightly in the end of the season. All salmon are released so their number is continuously increasing. Despite that, they are caught at a decreasing rate. Catchability decreases with time.

The same goes for the grilse, catchability decreases sharply in the fall.

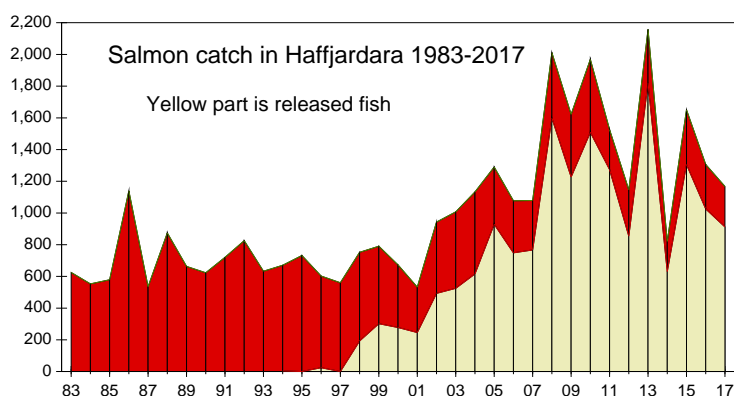


Fig. 4. Catch of salmon in Haffjardara 2013-2017. Red part is retained fish, yellow part is released fish.

Release of caught fish started in 1998 when 26% of the caught fish were released. This increased to 52% in 2002 to increase further to 80% in 2008 and has since then been around that figure (table 1)

There were some severe floodings during the last winter, the largest was in the beginning of December, 135 m<sup>3</sup>/s and another in the end of December 70 m<sup>3</sup>/s. The last flood was in the end of February, 105 m<sup>3</sup>/s. Floods generally do not harm parr but they tear away moss and other vegetation which grow up quickly again.

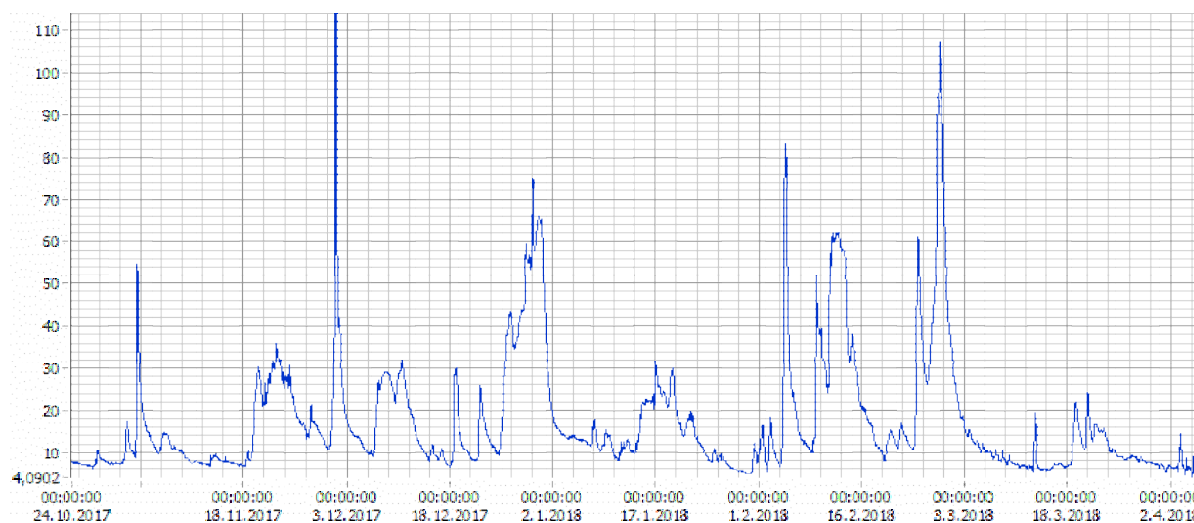


Fig.5. Water flow, m<sup>3</sup>/s, in Haffjardara October 24 2017- April 4 2018. The flow December 2 was 135 m<sup>3</sup>/s.